



**ABA SUPPORT SERVICES, LLC**

MAKING CONNECTIONS TODAY FOR A BETTER TOMORROW

# Annual Review/Annual Report 2023

June 30, 2024

# Letter From the President

---

I am excited and pleased to announce that ABA Support Services, LLC had lasting growth, training opportunities, and positive outcomes for 2023. Our administrative team did not require any organizational changes, as they were able to manage the growth.

Supervisors attended Penn State's Autism Conference and selected courses tailored to the individual needs of their clients. Dr. Sean Casey also presented on Functional Behavioral Concurrent Operant Assessment. This training addressed our staff's need to identify functions of behaviors better and to support and understand the behavior function through the everyday use of an FBA.

Dr. Casey also presented on assessing and treating children with feeding problems. New supervisors received AIM, PEAK, VB MAPP training, and other relevant programs. It is the position and belief of ABA Support Services, LLC that not every program fits every child, and it is our ethical responsibility to adapt and adjust to the child's needs. We believe in treating our clients based on their responses to the interventions we provide for them.

In October, we opened our second clinic in Allentown. Both clinics have been highly successful, and we continue to explore new locations in Harrisburg and Lock Haven.



# Letter From the President

---



Our Clinic Leads created warm, positive, and welcoming environments with fun activities that align with the seasons and preparations for integrating into regular daycares. The agency's staff has grown from 116 employees in 2022 to 131 employees in 2023, up 12 percent.

We see an increase in demand for our services, and we are grateful for our collaborative efforts with school districts, insurance companies, families, stakeholders, hospitals, and Children and Youth. Strong relationships support impactful changes in children's outcomes. We value transparency when delivering our services.

ABA Support Services, LLC remains committed to lasting partnerships with school districts and insurance companies. We are excited for 2024!

Respectfully,  
Amy Gable, M.Ed., BCBA, LBS  
President of ABA Support Services, LLC



# Mission/Core Values

---



## MISSION

ABA Support Services is a team of specialists providing research based interventions and resources for individuals and professionals who require support and training with behavioral management and skill development. We improve the quality of life for our clients, families, and professional communities.



## Integrity

We are transparent, honest and ethical in all our interactions with employees, clients, customers and public.



## Quality

We pursue the highest standards of excellence and quality



# The Leadership Team

---



**Amy Gable**  
*BCBA-President  
Owner*



**Jessica Williamson**  
*BCBA-Executive  
Director*



**Katie Humen**  
*BCBA-Clinical  
Director*



**Nick Eckman**  
*BCBA-Director of  
Training and  
Quality Assurance*



# The Leadership Team

---



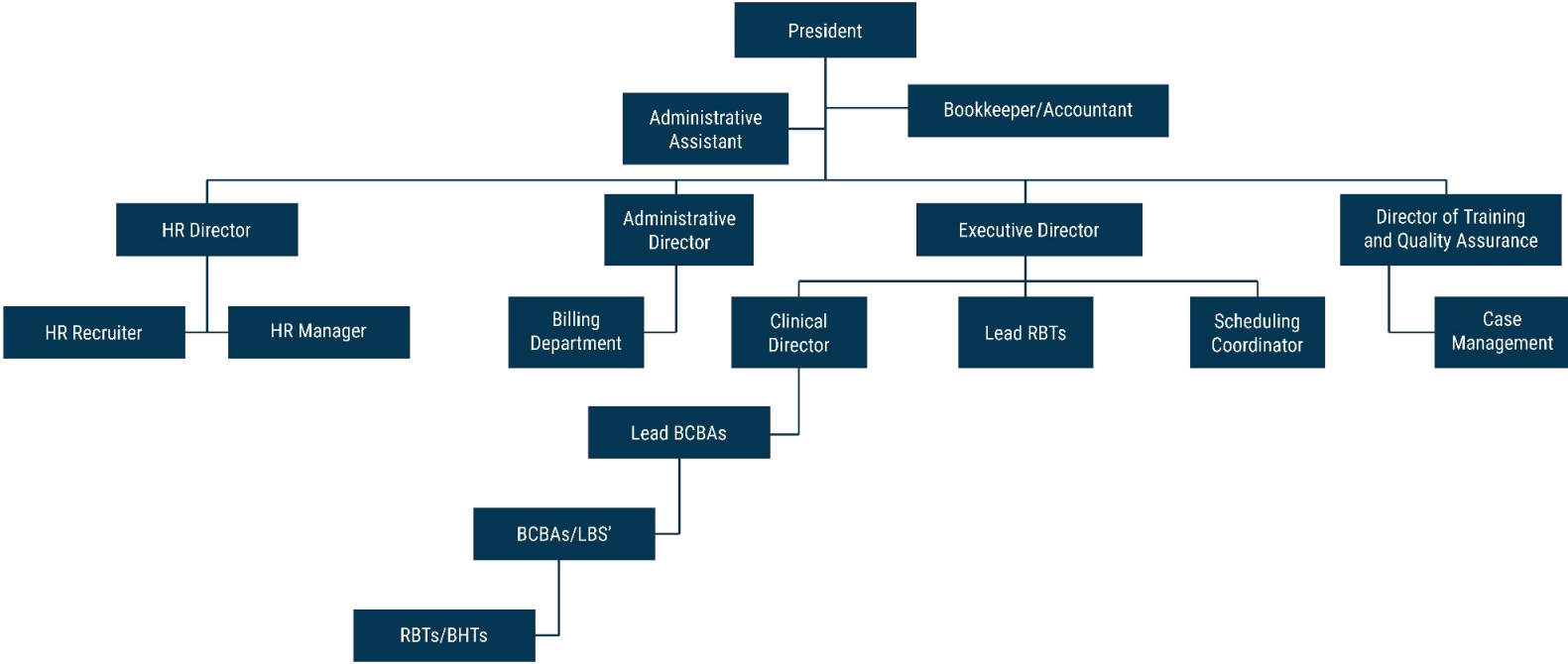
**Ann Adams**  
*Administrative Director*



**Raenee Mantoni**  
*Director of Human Resources*



# Organizational Chart



# Overview

---



## WHAT WE DO

Applied Behavior Analysis is the development, implementation, and evaluation of natural environment modifications to promote improvement in social behavior. ABA includes the use of observation, data collection and functional analysis of the relationship between the environment and behavior.

Our BCBA's utilize effective data recording methods and will utilize and make instruction decisions based on the Client's performance data.

The services are developed by the BCBA and implemented by the BCBA with the use of direct therapists, usually BAC Registered Behavioral Technicians, RBT. The BCBA supervises the direct therapist at least once per week with the client on an individual basis unless otherwise prescribed.





# Overview

---

## OUTCOMES

Service Initiation:  
2023

Average Time to Complete the  
Assessment and ITP:  
**21 business days**

Average Time to Receive  
Written Order:  
**1-2 business days**

Average Time to Initiate Services After the  
Complete of the Assessment/ITP:  
**2 business days**



# Who We Served

---

1/1/23

---

Total Clients  
**135**

12/31/23

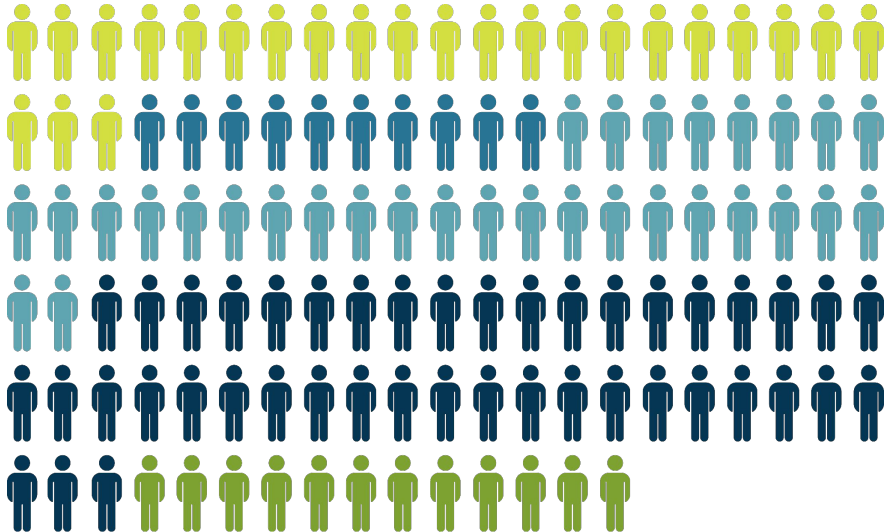
---

Total Clients  
**163**



# Who We Served

## Serviced by:



Board Certified Behavior Analysts (BCBA's): 24

Licensed Behavior Specialists (LBS's): 10

Registered Behavior Technician's (RBT's): 31

Direct Therapists (DT's): 43

Office Staff: 12

**Total Staff 120**



# Clinical Outcomes

---

## Berks County

Average number of days to complete assessment and initiate treatment - **7 days**

ABAS-3 General Adaptive Composite Score:  
**Extremely Low**

Average number of Goals Mastered During Review Period **32%**

## Clinton County

Average number of days to complete assessment and initiate treatment - **7 days**

ABAS-3 General Adaptive Composite Score:  
**Low**

Average number of Goals Mastered During Review Period **31%**



# Clinical Outcomes

---

## Cumberland County

Average number of days to complete assessment and initiate treatment - **22 days**

ABAS-3 General Adaptive Composite Score:  
**Extremely Low**

CANS Strength: members have remained stable in the strengths domains

CANS Needs: members have averaged an increase of 1 in the needs domain

Average number of Goals Mastered During Review Period **25%**



# Clinical Outcomes

---

## Dauphin County

Average number of days to complete assessment and initiate treatment - **24 days**

ABAS-3 General Adaptive Composite Score: **Low**

CANS Strength: members have remained stable in the strengths domains

CANS Needs: members have averaged a reduction of 1 in the needs domain

Average number of Goals Mastered During Review Period **13%**



# Clinical Outcomes

---

## Lackawanna County

Average number of days to complete  
assessment and initiate treatment - **8 days**

ABAS-3 General Adaptive Composite Score: **Low**

Average number of Goals Mastered  
During Review Period **21%**



# Clinical Outcomes

---

## Lehigh County

Average number of days to complete assessment and initiate treatment – **30 days**

ABAS-3 General Adaptive Composite Score: **Low**

CANS Strength: members have averaged a reduction of 1.5 in the strengths domain

CANS Needs: members have averaged a reduction of 1 in the needs domain

Average number of Goals Mastered During Review Period **29%**





# Clinical Outcomes

---

## Lycoming County

Average number of days to complete assessment and initiate treatment - **13 days**

ABAS-3 General Adaptive Composite Score:  
**Extremely Low**

Average number of Goals Mastered During Review Period **12%**

## Montour County

Average number of days to complete assessment and initiate treatment - **15 days**

ABAS-3 General Adaptive Composite Score: **Above Average**

Average number of Goals Mastered During Review Period **66%**



# Clinical Outcomes

---

## Monroe County

Average number of days to complete  
assessment and initiate treatment - **12 days**

ABAS-3 General Adaptive Composite Score:  
**Below Average**

Average number of Goals Mastered  
During Review Period **10%**



# Clinical Outcomes

---

## Northampton County

Average number of days to complete assessment and initiate treatment – **28 days**

ABAS-3 General Adaptive Composite Score: **Low**

CANS Strength: members have remained stable in the strengths domains

CANS Needs: members have averaged a reduction of 2 in the needs domain

Average number of Goals Mastered During Review Period **27%**



# Clinical Outcomes

---

## Schuylkill County

Average number of days to complete assessment and initiate treatment - **7 days**

ABAS-3 General Adaptive Composite Score:  
**Above Average**

Average number of Goals Mastered During Review Period **10%**

## York County

Average number of days to complete assessment and initiate treatment - **13 days**

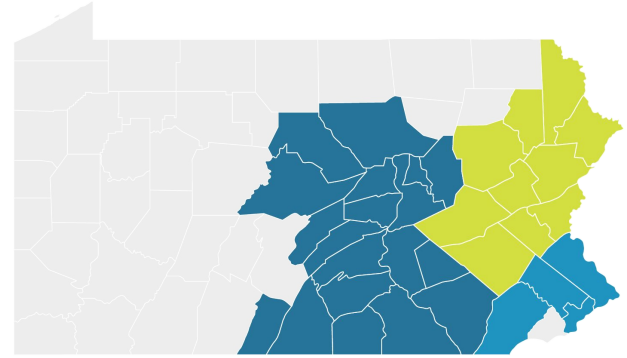
ABAS-3 General Adaptive Composite Score:  
**Average**

Average number of Goals Mastered During Review Period **30.9%**



# Areas Served

## 29 Counties in Pennsylvania



### Northeast Region

Berks, Carbon, Lackawanna, Lehigh, Luzerne, Monroe, Northampton, Pike, Schuylkill, and Wayne Counties

Percentage of Clients: **72%**

### Central Region

Adams, Centre, Clinton, Columbia, Cumberland, Dauphin, Franklin, Fulton, Juniata, Lancaster, Lycoming, Lebanon, Mifflin, Montour, Northumberland, Perry, Snyder, Union, and York Counties

Percentage of Clients: **28%**

### Southeast Region

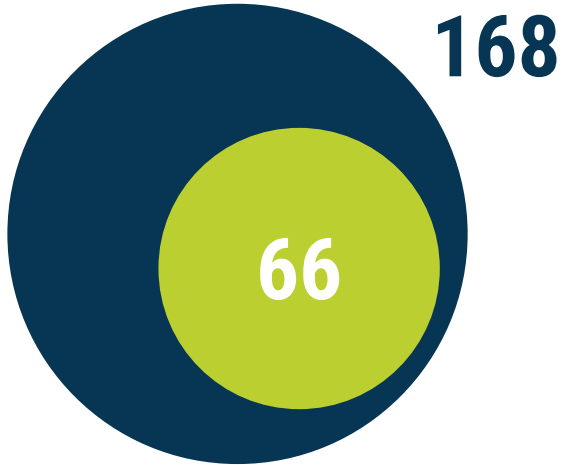
Bucks, Chester, Montgomery, and Philadelphia Counties

Percentage of Clients: **0%**



# Satisfaction Results

---



All were **electronic survey submissions** and 0 responses by phone survey.

A 39% response rate duplicated and 31% response rate unduplicated.



Overall average rate of 4.0/5.0



# Satisfaction Results

---



# Hosted ABA Events

---

*Sean Casey, Ph.D. BCBA LBS - Heartland  
Pediatric Feeding Disorders Services*

---

## **Functional Behavioral Assessment: The Concurrent Operant Assessment**

6/26/2023 and 6/27/2023

Audience: BCBA/LBS

*Kodey Lai, Ph.D.(c) ; Presely Wanner, MA,  
BCBA, Timothy Templin PhD(c) BCBA - The  
Crime & Behavior Analysis Academy*

---

## **The Analysis of Crime & Behavior**

11/12/2023

Audience: BCBA/LBS







**Everybody can be great...  
because anybody can serve.**

---

Martin Luther King Jr.

---



Annual Review/Annual Report 2023